

Reasonable Accommodation Policy or Strategy for People with Disabilities at ESPOL 2024

ESPOL is committed to fostering an inclusive and diverse educational environment. Our policies and strategies ensure that individuals with disabilities receive adequate support and resources.

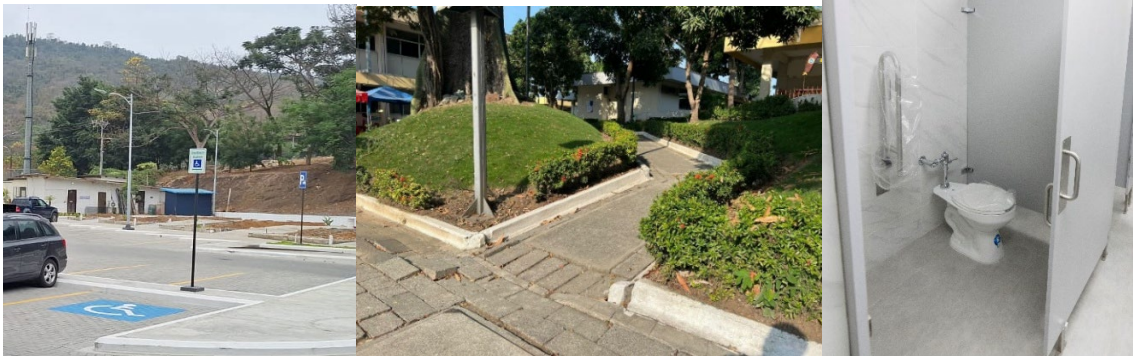
Reasonable Accommodation Policy

ESPOL has a policy in place to ensure that people with disabilities have access to necessary accommodations, including accessible infrastructure and academic support.

<https://www.bienestar.espol.edu.ec/diversidad-e-inclusion>

Campus Accessibility

ESPOL provides accessible parking, bathrooms, and ramps to facilitate mobility for individuals with disabilities. These facilities promote equal opportunities and an inclusive environment.



Politécnica Residences

Politécnica Residences at ESPOL play a crucial role in the university's reasonable accommodation policy by providing accessible and inclusive housing for students with disabilities. These residences, designed with innovative and sustainable infrastructure, offer living spaces adapted to diverse needs, ensuring that students from remote areas and those facing financial hardship have a barrier-free environment to pursue their education. By integrating universal accessibility standards, ESPOL fosters an equitable academic and social experience, reinforcing its commitment to equal opportunities and the elimination of barriers in higher education.

<https://www.espol.edu.ec/es/noticias/segunda-etapa-de-residencias-estudiantiles-se-inaugura-en-espol>

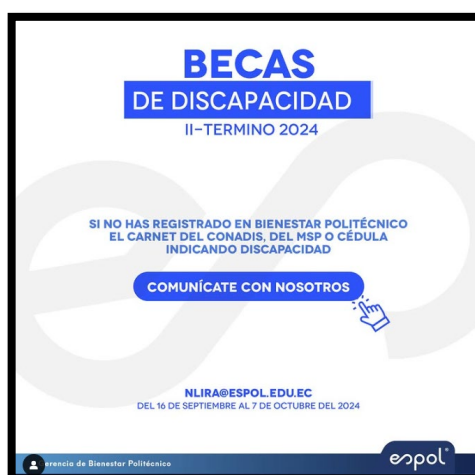


Disability Scholarship Program

ESPOL offers disability scholarships from the first semester, ensuring financial support for students who need it.

https://www.instagram.com/bienestarespol/p/C_27Tbpvt1g/

https://www.bienestar.espol.edu.ec/sites/default/files/REG-ACA-VRA-021%20REGLAMENTO%20DE%20BECAS%20Y%20AYUDAS%20ECON%20MICAS%20PARA%20ESTUDIANTES%20DE%20GRADO%20DE%20LA%20ESPOL%20-%20204310_0.pdf



Dona Futuro program

Dona Futuro program at ESPOL is a solidarity-driven philanthropic initiative that provides financial aid to talented students facing economic hardship, including those with disabilities. By supporting students through scholarships and resources, Dona Futuro aligns with ESPOL's reasonable accommodation policies, ensuring that individuals with disabilities receive the necessary support to succeed in their academic journey. This initiative reflects ESPOL's commitment to inclusion, equity, and accessibility in higher education.

https://www.instagram.com/p/C-GF3Xtx1t/?utm_source=ig_web_copy_link&igsh=MzRIODBiNWFIZA%3D%3D

<https://www.donafuturo.org/>



Plan Padrino

Through the Plan Padrino program at ESPOL, assistance has been provided for transportation, food, books, and basic necessities to students in highly vulnerable conditions.

Additionally, the Plan Padrino project organizes donation campaigns for non-perishable food to support students in need.

<https://alumni.espol.edu.ec/proyectos-institucionales>



Prepared by:

Mgtr. Niza Cristina Lira López