

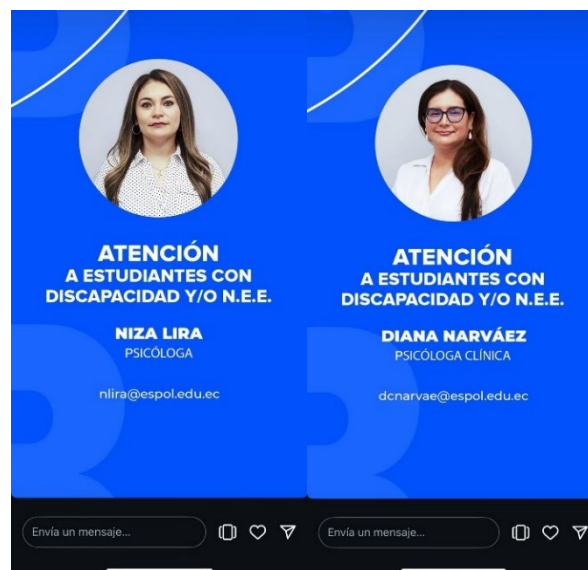
Access Schemes for People with Disabilities at ESPOL 2024

Diversity, inclusion, and equity are fundamental pillars of ESPOL's mission. We incorporate these values into our research, teaching, learning, engagement, and decision-making processes at all levels of the institution.

The following resources and initiatives reaffirm our commitment to creating a more inclusive and diverse community—one that is free from discrimination, embraces differences, and respects all individuals based on human rights principles:

- Support Plan for Students with Special Learning Needs
- Mentorship Program (Plan Padrino)
- Dona Futuro Scholarship
- ESPOL Residences
- CDI Baby ESPOL
- Diversity Map
- Interculturality Initiatives
- Gender Equality Programs

<https://www.bienestar.espol.edu.ec/diversidad-e-inclusion>



"INCLUSIÓN SIN FRONTERAS" PROJECT

"Inclusión sin Fronteras" project plays a crucial role in ESPOL's Access Schemes for People with Disabilities, as it fosters an inclusive and supportive academic environment for students with specific educational support needs and disabilities. By providing psycho-pedagogical support, emotional well-being initiatives, and professional development programs, this initiative ensures that students receive the necessary tools to succeed academically and transition effectively into the workforce. Additionally, it strengthens the

institution's commitment to diversity, equity, and accessibility, reinforcing ESPOL's position as a leader in inclusive higher education.

<https://www.expreso.ec/actualidad/inclusion-personas-autistas-academia-209689.html>

<https://x.com/BienestarESPOL/status/1719432066519925164>



Support Schemes for Students with Disabilities

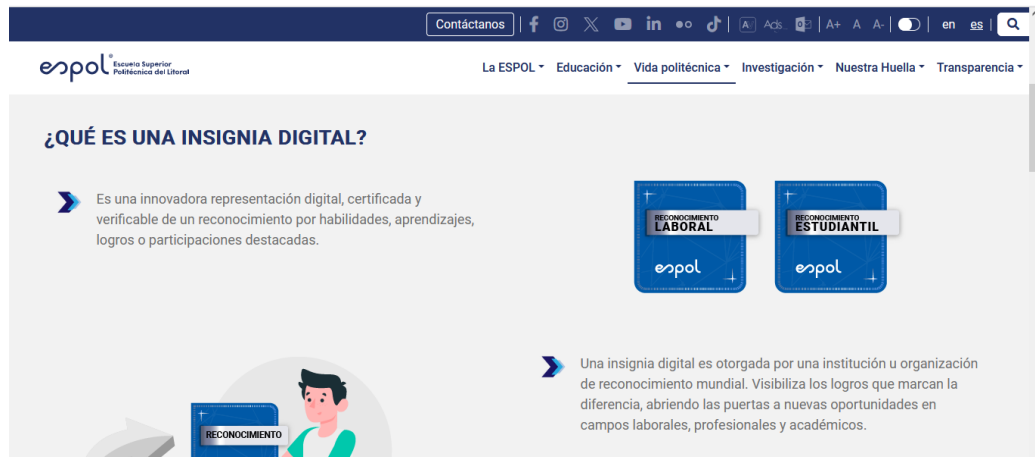
Our volunteer assistants dedicate part of their time to supporting fellow students who need academic reinforcement through targeted assistance.

Accredited assistants are undergraduate students with strong knowledge in basic science subjects, demonstrating solidarity and sensitivity. They provide voluntary tutoring to students requiring support in subjects with low pass rates.

<https://www.facebook.com/espol/posts/pfbid0JZifuBMG3MvEMxiwuLigrvSgBJPPq3nNYUtYqnRpboE74eK1urbaTj1oNG6i7uaTl>

<https://www.espol.edu.ec/es/insignias-digitales>





Academic Advising Program

Academic Advising Program at ESPOL plays a crucial role in the reasonable accommodation policy for people with disabilities by providing a personalized guidance and support system throughout their academic journey. Through scheduled meetings with faculty advisors, students with disabilities receive tailored academic counseling that includes planning their course load, time management strategies, and recommendations for extracurricular activities that enhance their overall development. Additionally, this system allows for continuous monitoring of student progress, facilitating the identification of potential challenges and ensuring the implementation of reasonable accommodations to promote their inclusion and academic success. Access to this personalized guidance through the online platform strengthens the institution's commitment to equity and equal opportunities at ESPOL.

www.consejerias.espol.edu.ec

<https://www.espol.edu.ec/es/vida-politecnica/servicios>



Prepared by:

Mgtr. Niza Cristina Lira López